



Emission Testing DSP700 Smokemeter Range

The DSP700 Smokemeter is primarily designed for use on the UK MoT Test. It includes new HGV Reduced Pollution Certification test (RPC) enabling fleet operators to reduce running costs.

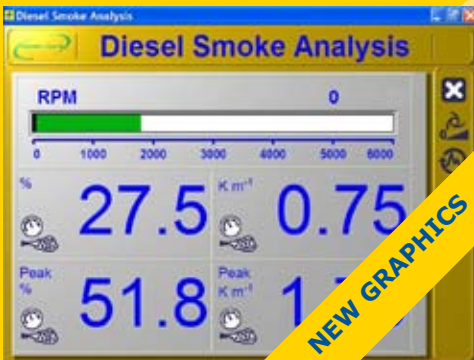
The VOSA Approved DSP700 caters for all diesel vehicles, cars, vans, trucks, buses, plus light and heavy plant machinery - with sampling pipe options to suit different exhaust types.

The robust smokehead is easy to handle, well balanced, and weatherproof and has a low warm-up time with a accurate measurement down to at least -15 deg C. Wet or cold conditions present no problems to this emission analyser. The DSP700 has a Patented automatic self-calibration



Standard Features

- Approved to the 2004 Diesel MOT Specification
- Operates at low temperatures - head useable down to -15 deg C
- Weatherproof low voltage measuring head for outdoor use
- Short warm-up time - maximum 10 minutes
- Patented automatic self-calibration
- PC with 19" Flat Screen
- Ideal for mixed fleet operations
- Laser A4 Printer
- Acoustic Low Smoke Trigger



Options

- Battery Tachometer
- Wireless Battery Tachometer (BT model only)
- Wireless Remote Handset (BT model only)
- Wireless Temperature Probe (BT model only)
- Wireless Keyboard
- Commercial vehicle sample probes for central and stack exhausts
- Remote 19" Display
- 3 year extended care contract
- 5 year extended care contract

Models Available

- | | |
|----------------|---|
| DSP700-C-EN500 | VOSA approved Smokemeter Workstation with 10m cabled digital smokemeter |
| DSP700-B-EN500 | VOSA approved Smokemeter Workstation with wireless digital smokehead |

